

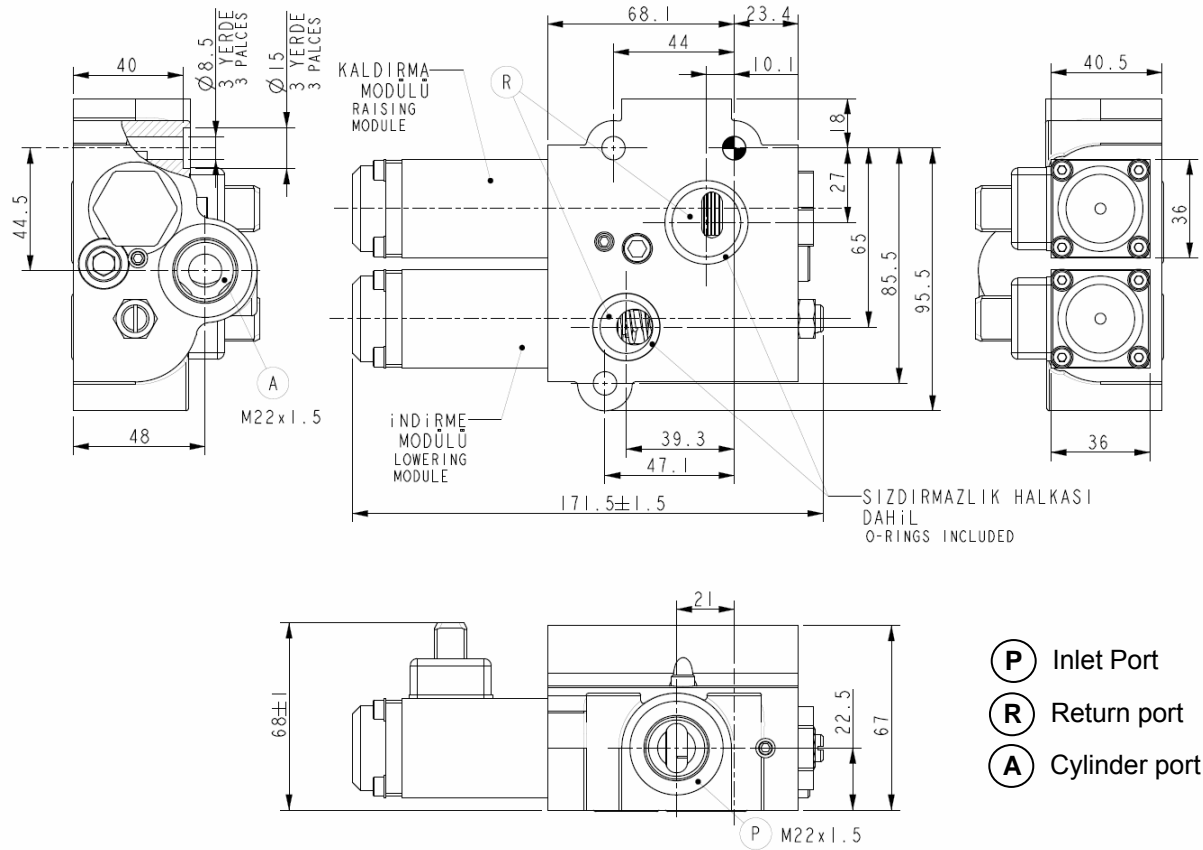
HEMA EHH75

Electro-Hydraulic Hitch Control System



HEMA EHH75

Electro Hydraulic Control Valve



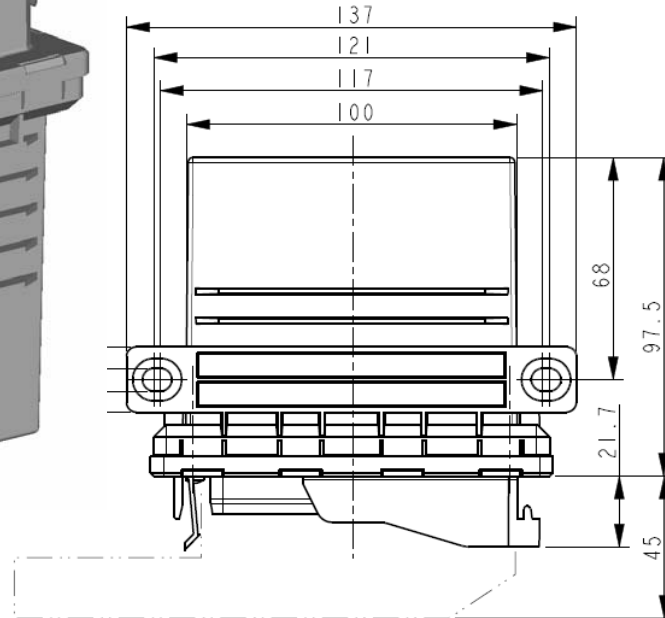
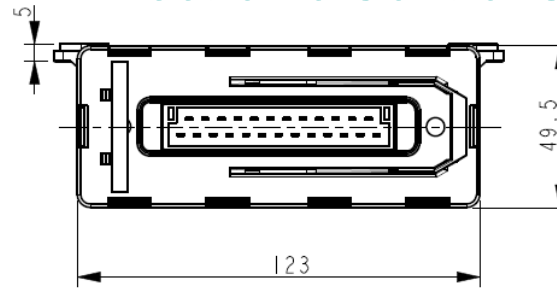
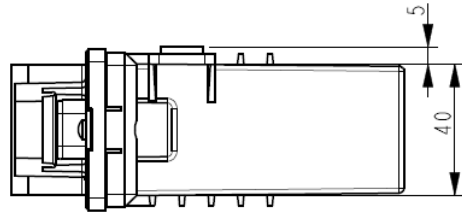
HEMA EHH75

Electronic Control Unit

Digital control driver for control valve with using set point value and actual value.

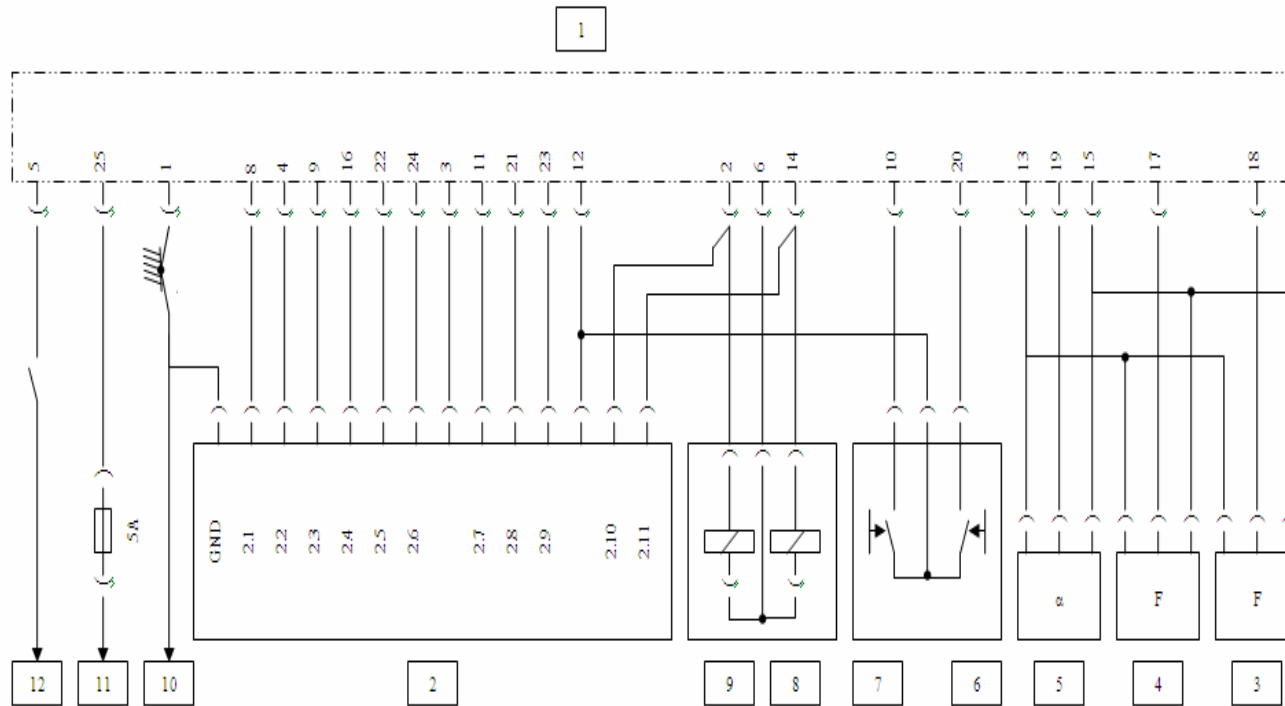
Specifications

Electrical Connection:	25 PIN
Supply voltage:	12-15 V DC
Degree of protection:	IP54 A with Plug Connector
Operating temperature:	-30...65°C
Options:	CAN Bus (basic CAN)



HEMA EHH75

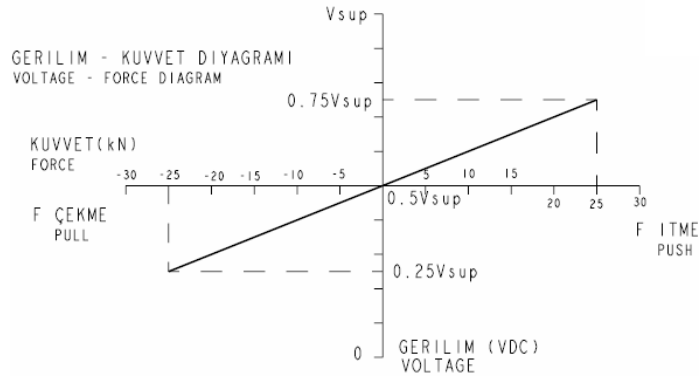
Wiring



1. Electronic Control Unit
2. Control Panel
 1. Function Select
 2. Mix Control
 3. Dignostics Display
 4. Setpoint Adjustment
 5. Limit Upper End Position
 6. Lowering Speed
 7. VibrationDampingDisplay(op.)
 8. VibrationDampingButton(op.)
 9. RapidLoweringButton(op.)
 10. RaiseDisplay
 11. LowerDisplay
3. Force Sensor,Right
4. Force Sensor,Left
5. Position Sensor
6. Lowering Button
7. Lifting Button
8. Lowering Solenoid
9. Lifting Solenoid
10. Ground
11. Power Supply
12. Enable Switch

HEMA EHH75

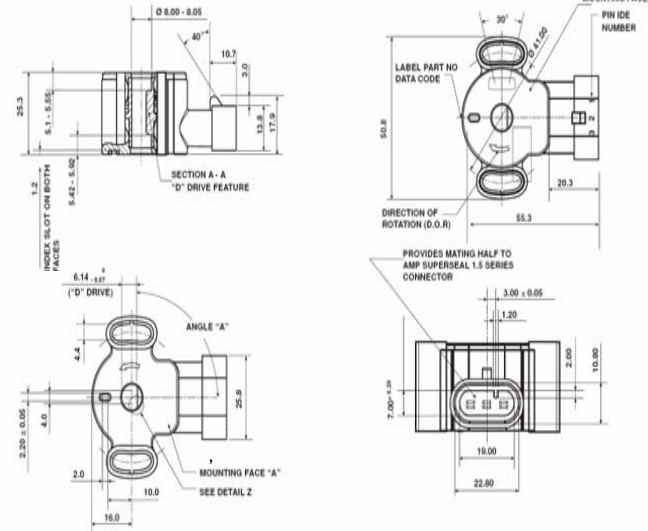
Loadpin



Specs

Load range:	±25 kN
Max. Load:	±80 kN
Supply voltage:	5-12 V
Protection factor:	IP66A
Connector protection factor:	IP64A
Operating temperature:	-30...100°C
Connection type:	3-pin plug

Rotary Position Sensor



Features

Mountable on Both Faces
Standard Electrical Resistance

Specs

Rotation:	190°
Electrical Rotation:	180°
Standard Resistance:	5KΩ, ± 20°C
Maximum Voltage:	30.0VDC
Operating temperature:	-40...130°C
Protection factor:	IP67